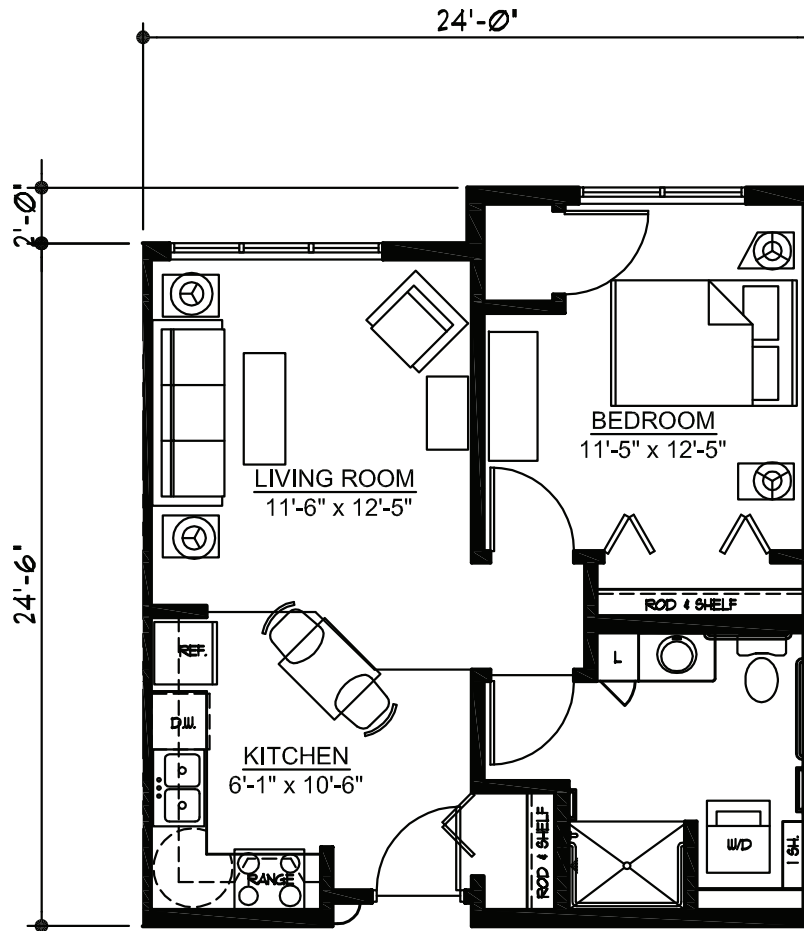


WindSong A-unit



One bedroom

609 square feet

(Dimensions and square footage may vary)

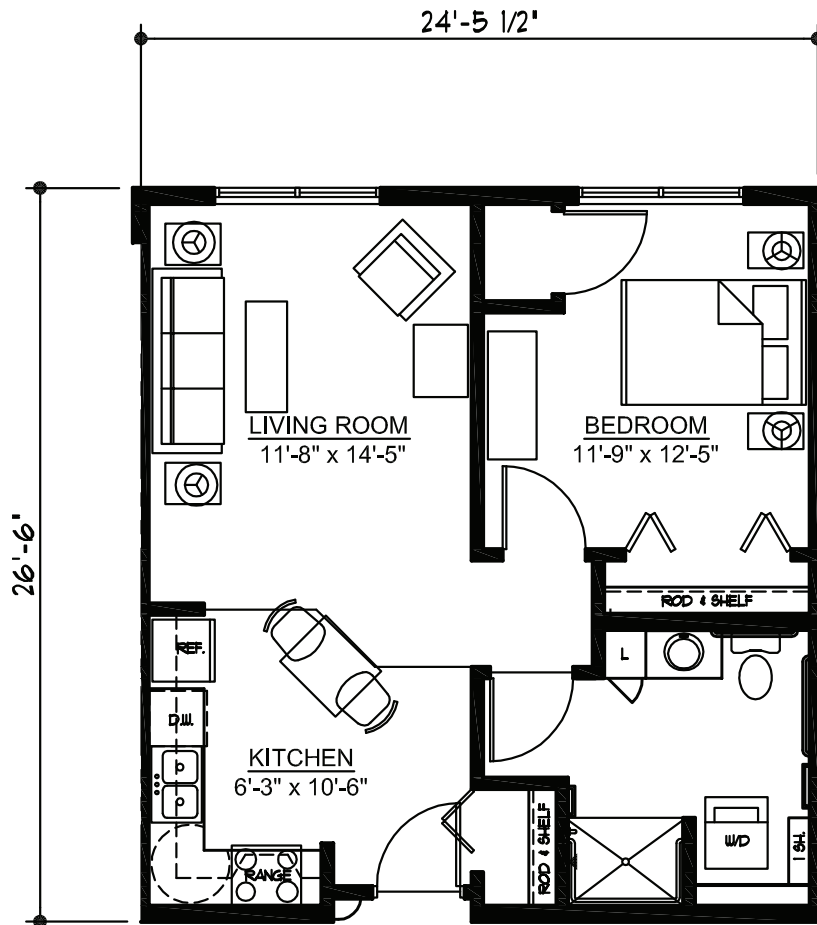
Sanford Health WoodsEdge

(218) 333-6128

1000 Anne St. NW • Bemidji, MN 56601

sanfordhealth.org

WindSong B-unit



One bedroom

644 square feet

(Dimensions and square footage may vary)

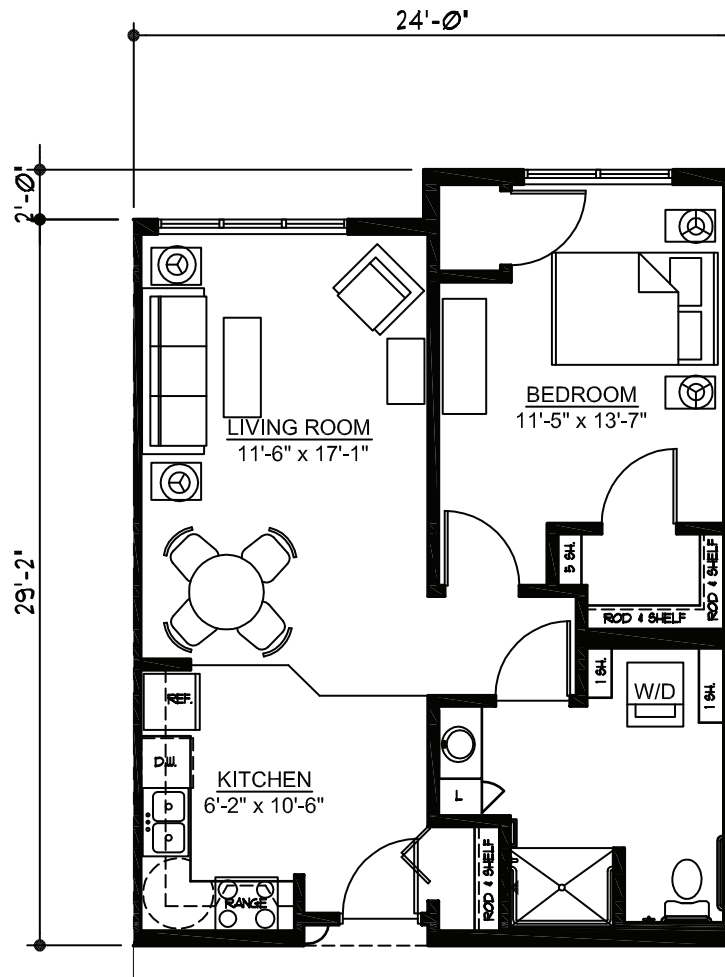
Sanford Health WoodsEdge

(218) 333-6128

1000 Anne St. NW • Bemidji, MN 56601

sanfordhealth.org

WindSong C-unit



One bedroom

721 square feet

(Dimensions and square footage may vary)

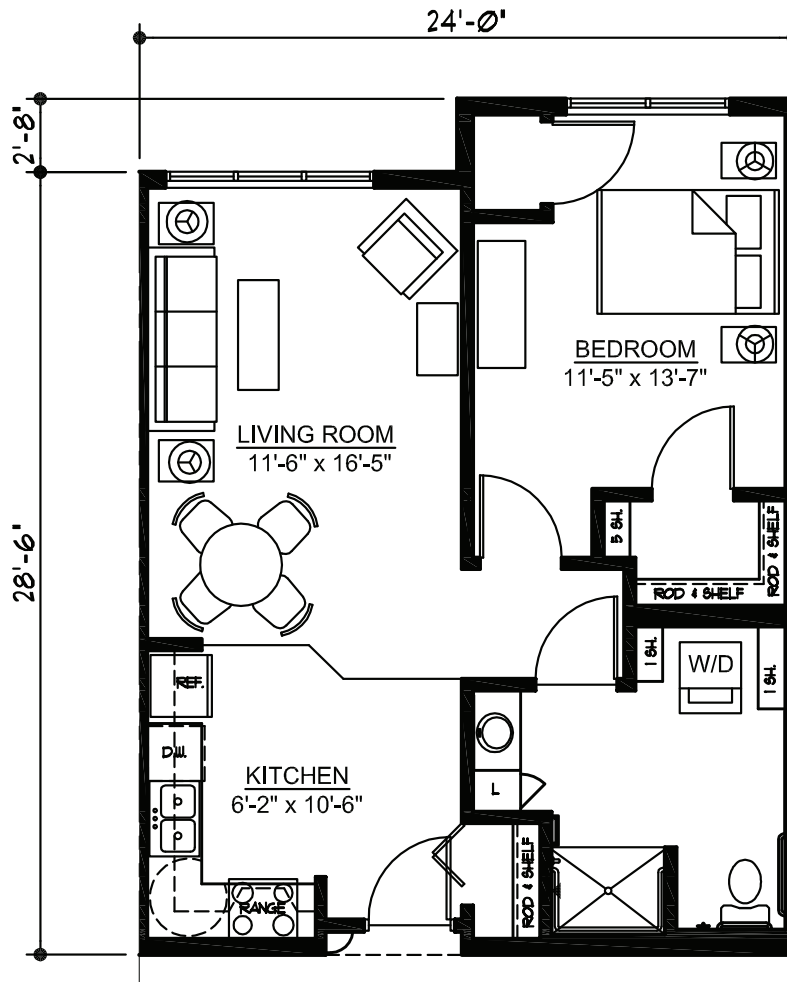
Sanford Health WoodsEdge

(218) 333-6128

1000 Anne St. NW • Bemidji, MN 56601

sanfordhealth.org

WindSong C-unit



One bedroom

713 square feet

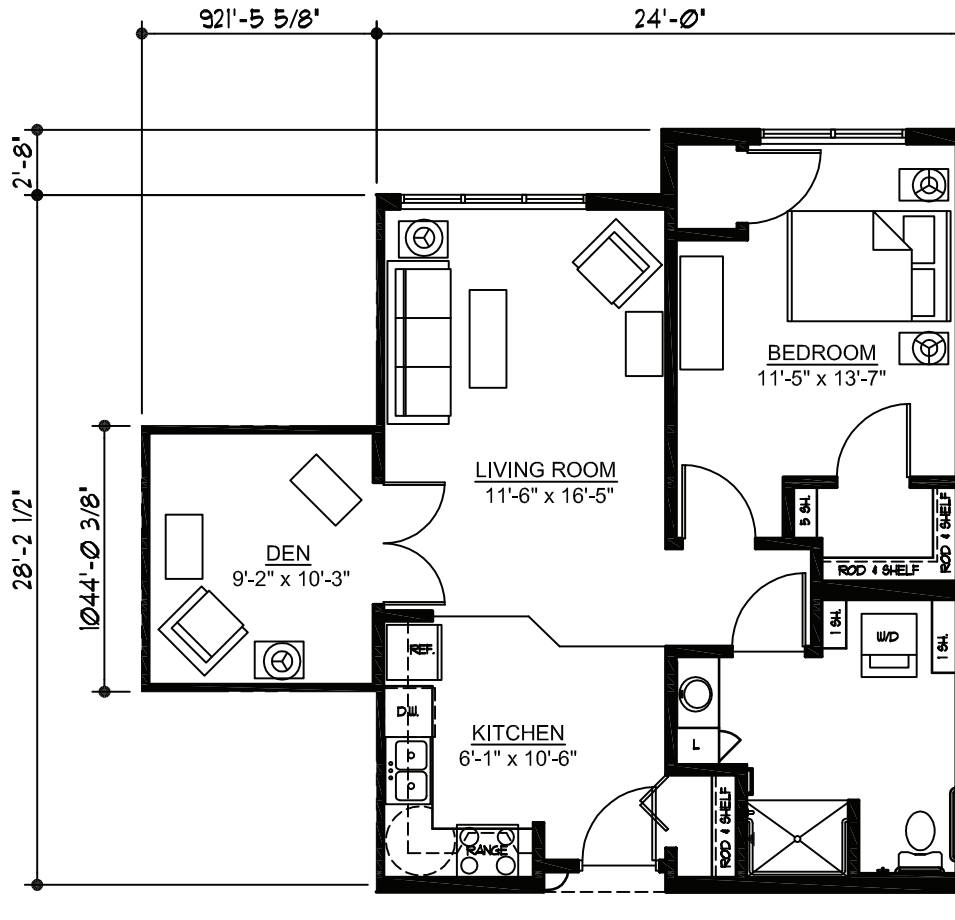
(Dimensions and square footage may vary)

Sanford Health WoodsEdge

(218) 333-6128
1000 Anne St. NW • Bemidji, MN 56601
sanfordhealth.org

SANFORD
HEALTH

WindSong E-unit



One bedroom with den

814 square feet

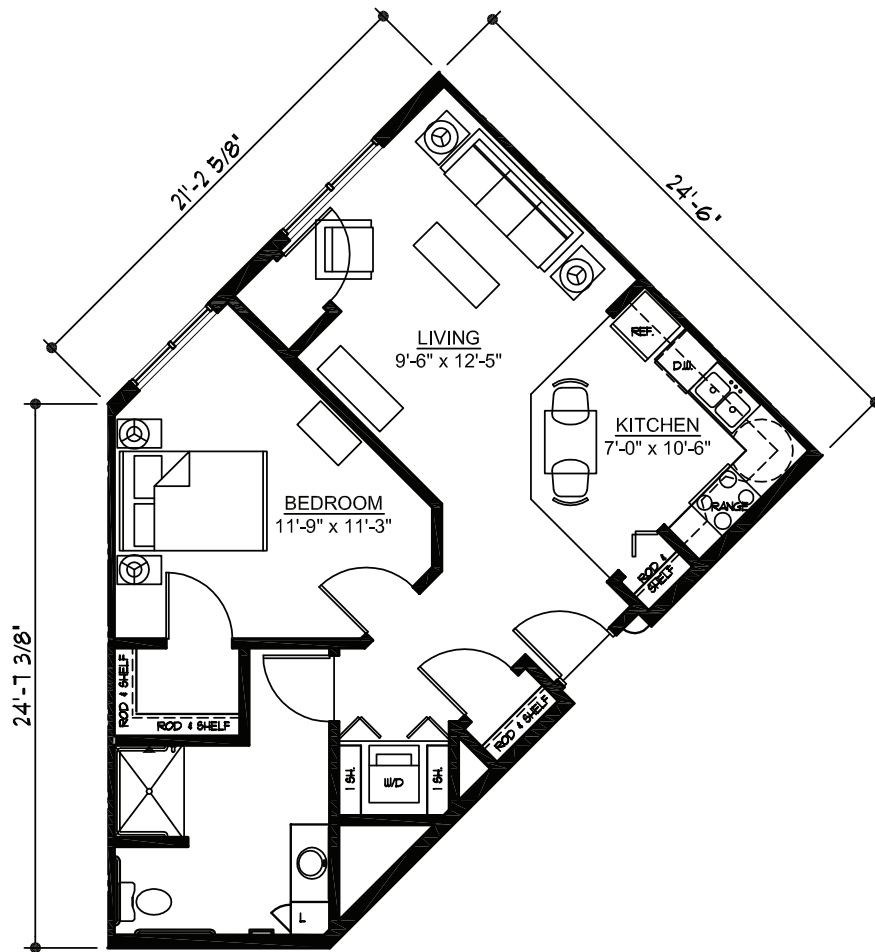
(Dimensions and square footage may vary)

Sanford Health WoodsEdge

(218) 333-6128
 1000 Anne St. NW • Bemidji, MN 56601
sanfordhealth.org

SANFORD
 HEALTH

WindSong E-unit



One bedroom

766 square feet

(Dimensions and square footage may vary)

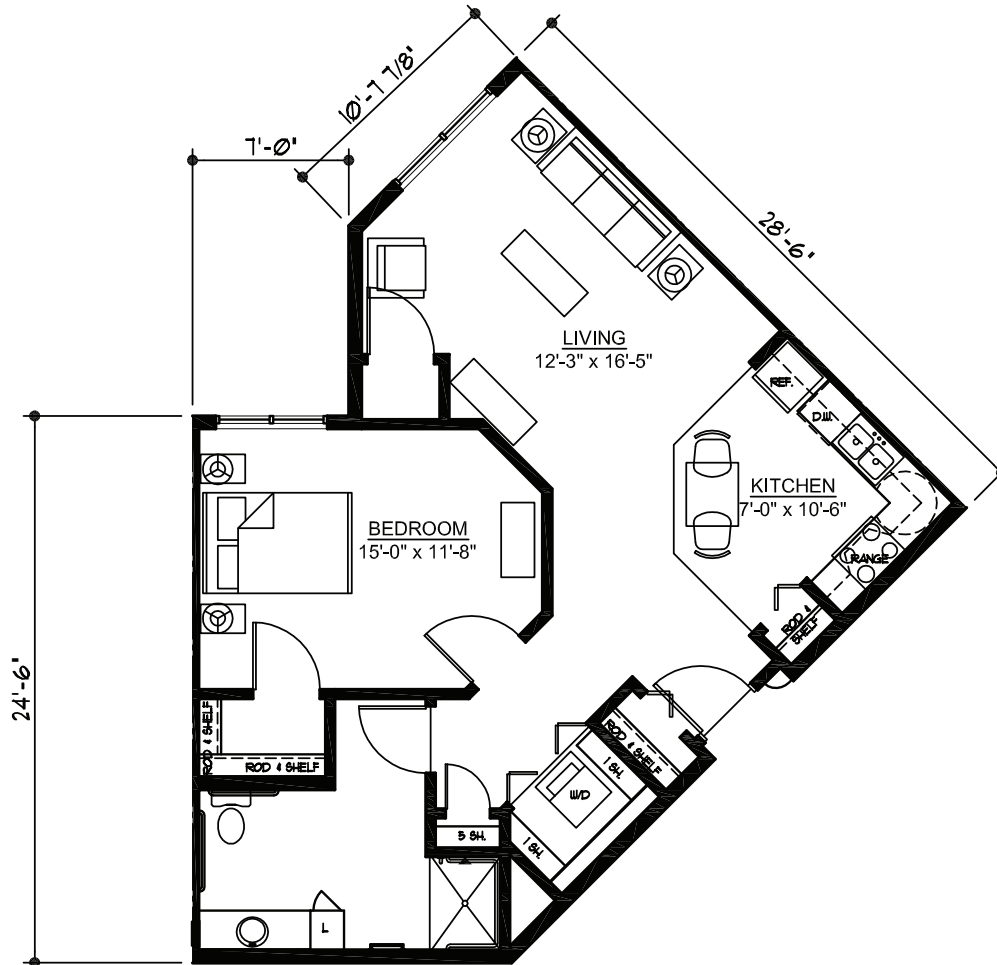
Sanford Health WoodsEdge

(218) 333-6128

1000 Anne St. NW • Bemidji, MN 56601

sanfordhealth.org

WindSong F-unit



One bedroom

850 square feet

(Dimensions and square footage may vary)

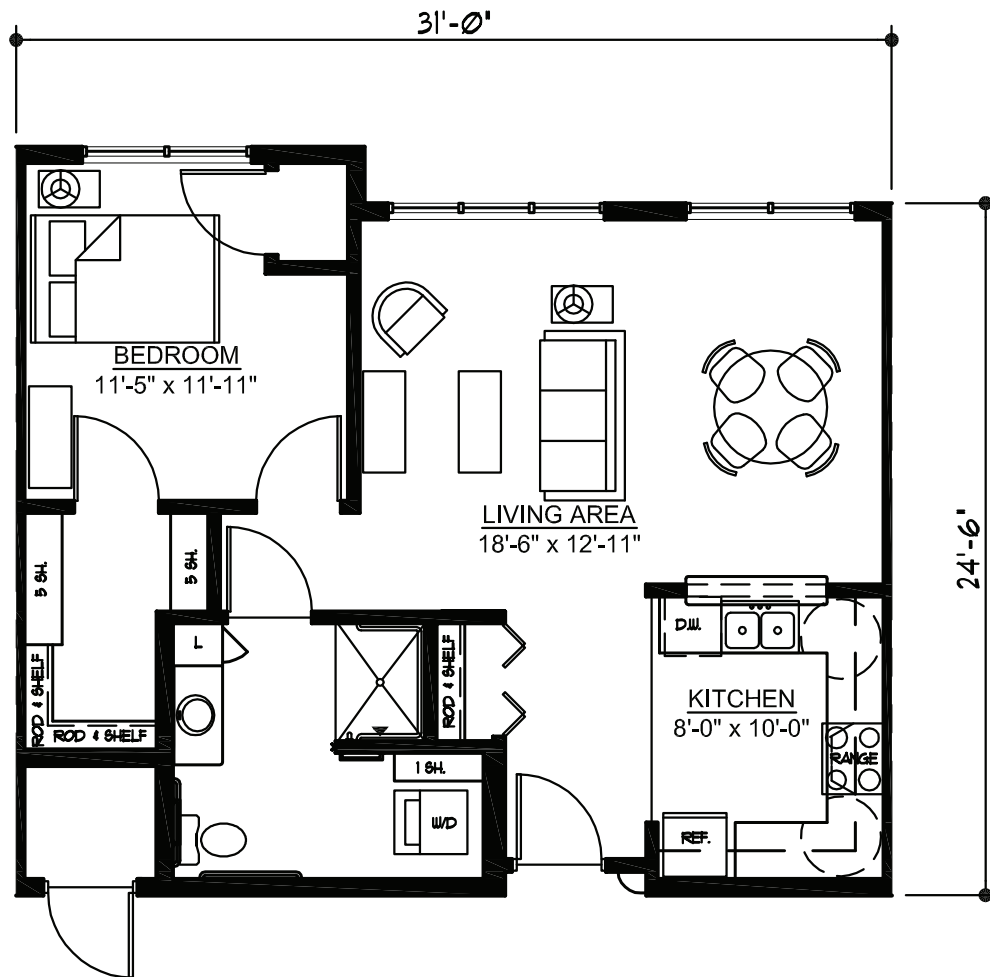
Sanford Health WoodsEdge

(218) 333-6128

1000 Anne St. NW • Bemidji, MN 56601

sanfordhealth.org

WindSong E-unit



One bedroom

758 square feet

(Dimensions and square footage may vary)

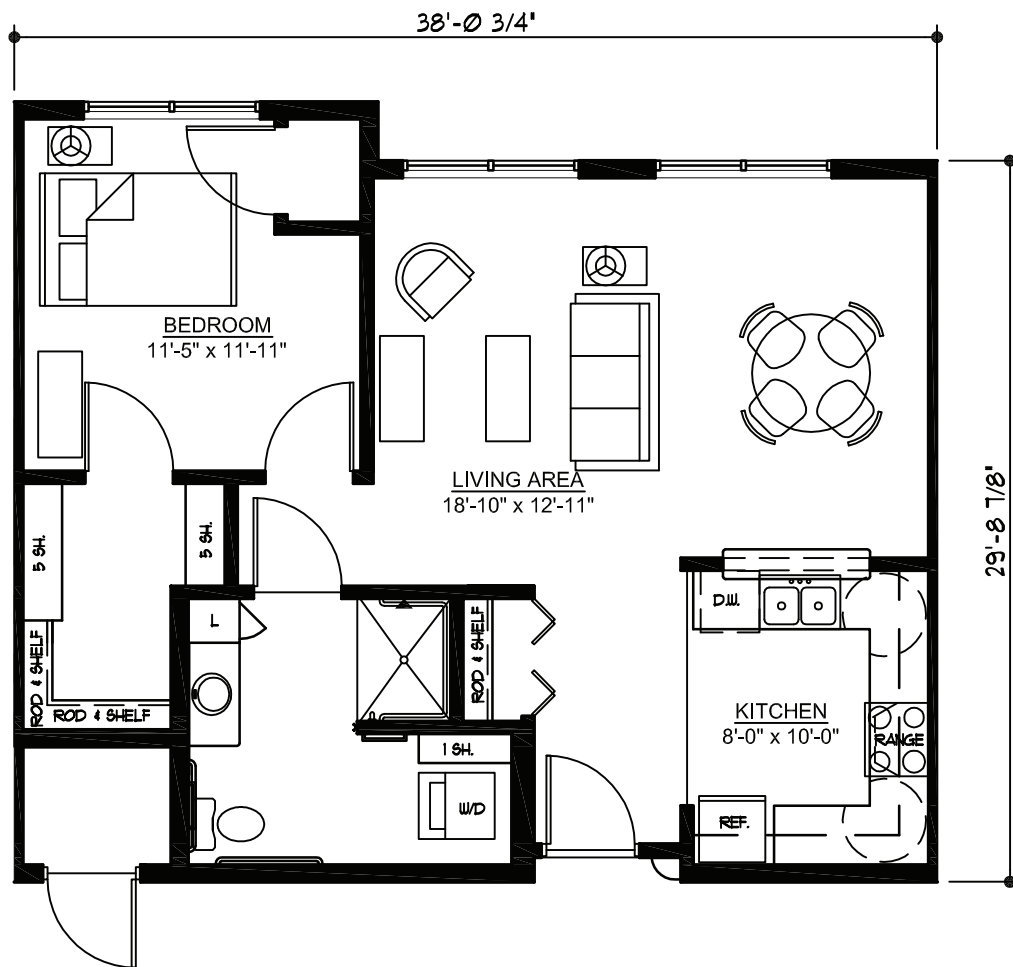
Sanford Health WoodsEdge

(218) 333-6128

1000 Anne St. NW • Bemidji, MN 56601

sanfordhealth.org

WindSong E-unit



One bedroom

764 square feet

(Dimensions and square footage may vary)

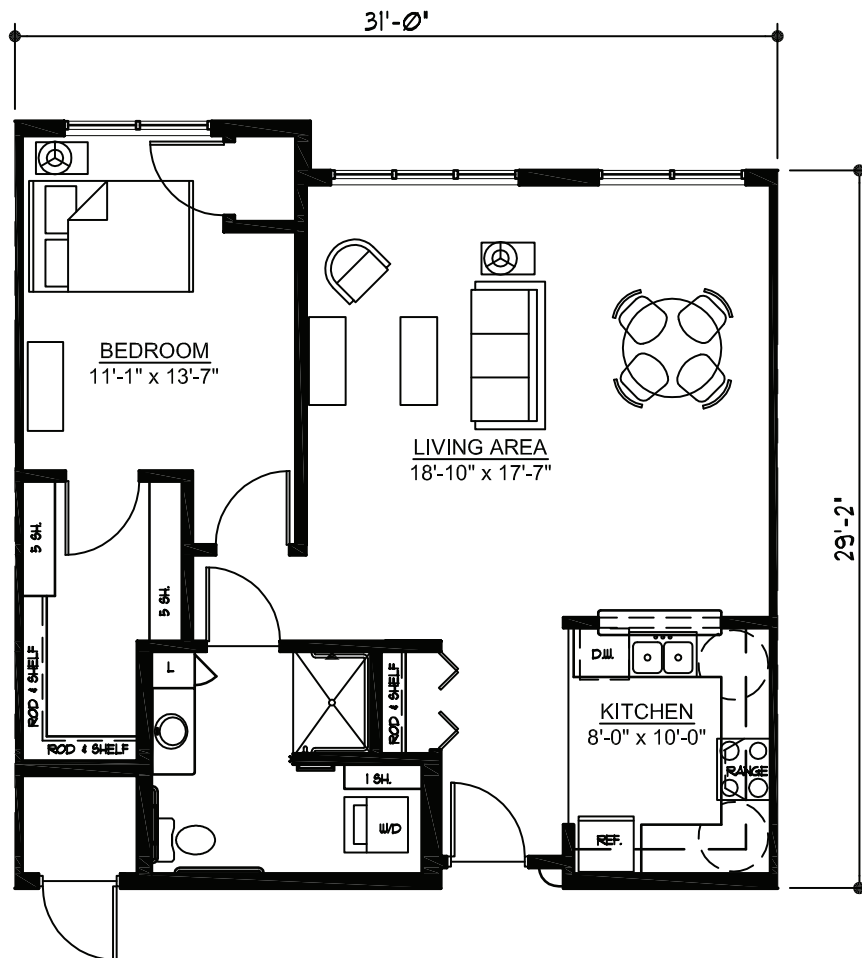
Sanford Health WoodsEdge

☎ (218) 333-6128

📍 1000 Anne St. NW • Bemidji, MN 56601

🌐 sanfordhealth.org

WindSong G-unit



One bedroom

901 square feet

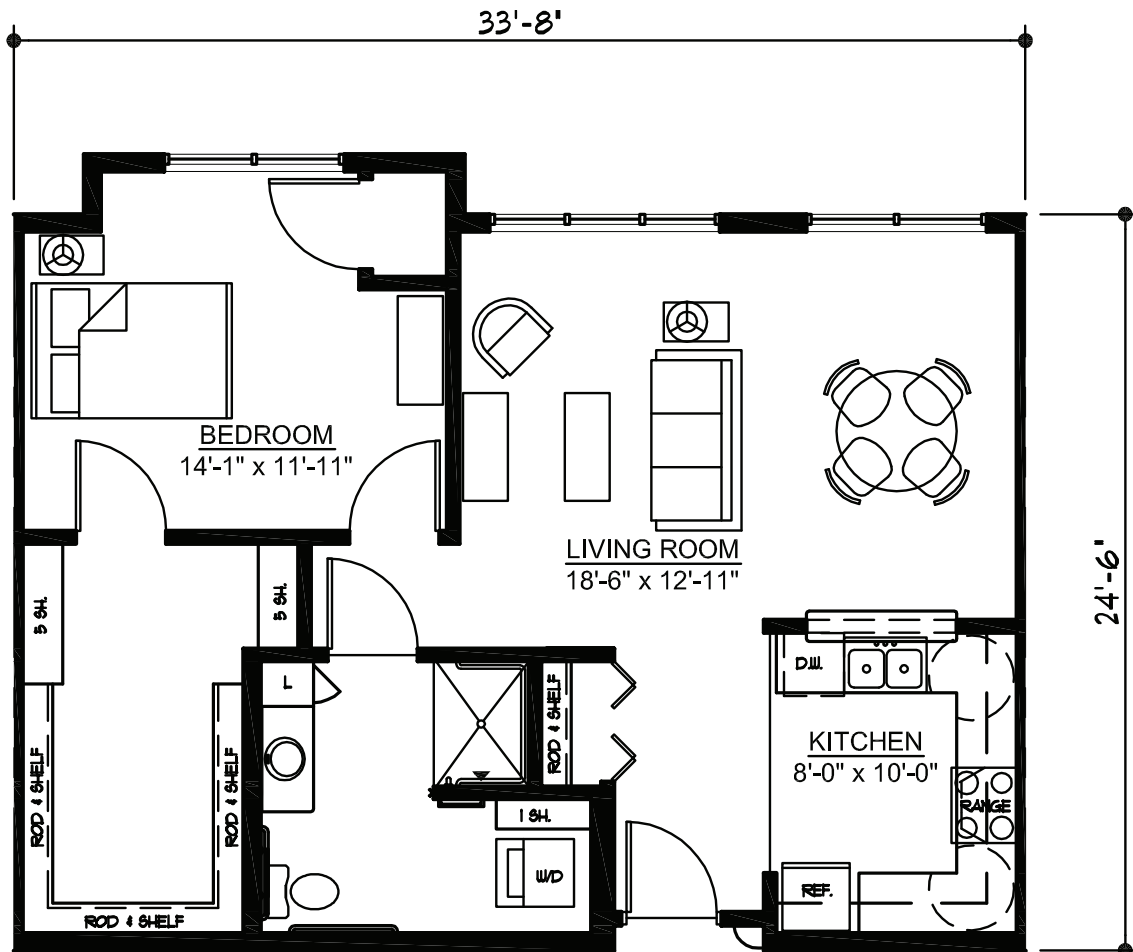
(Dimensions and square footage may vary)

Sanford Health WoodsEdge

(218) 333-6128
1000 Anne St. NW • Bemidji, MN 56601
sanfordhealth.org

SANFORD
HEALTH

WindSong F-unit



One bedroom

846 square feet

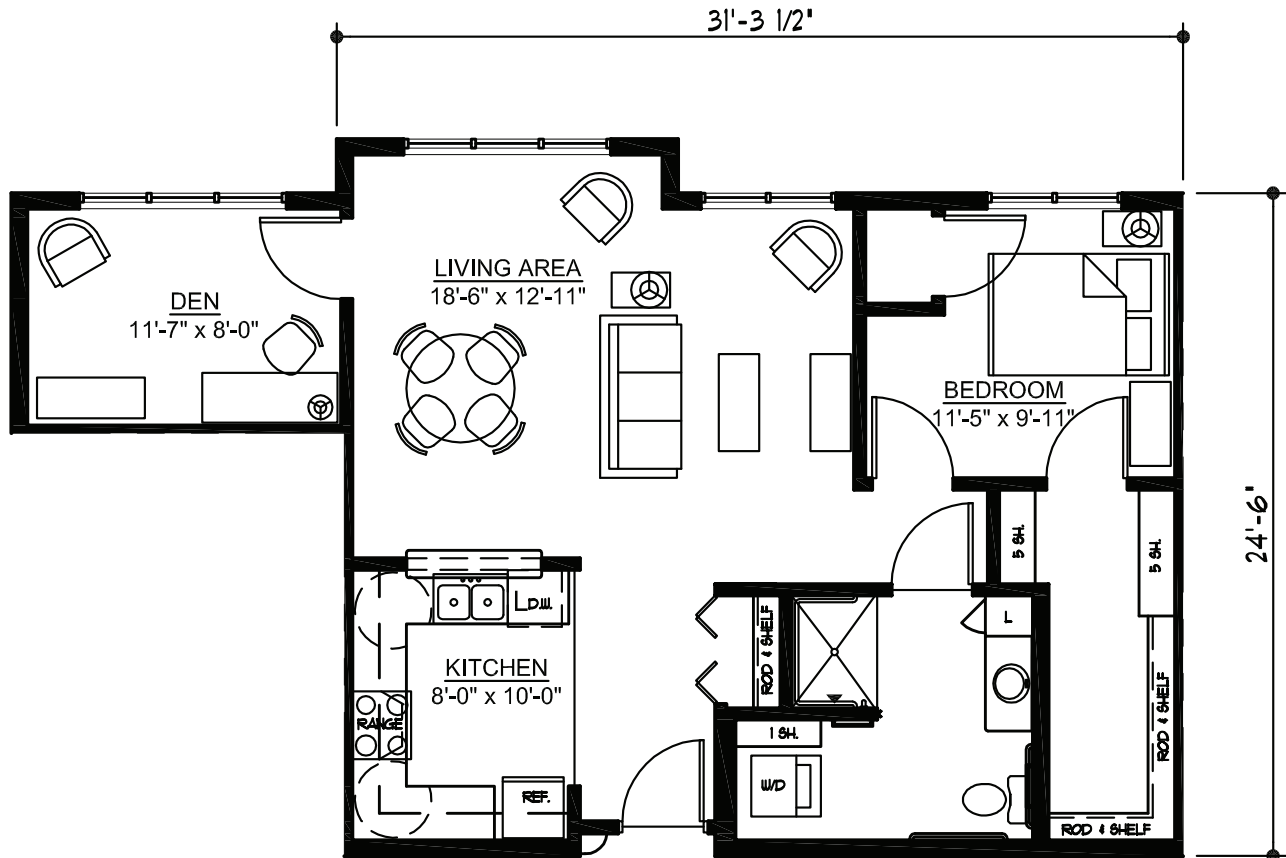
(Dimensions and square footage may vary)

Sanford Health WoodsEdge

(218) 333-6128
1000 Anne St. NW • Bemidji, MN 56601
sanfordhealth.org

SANFORD
HEALTH

WindSong G-unit



One bedroom with den

891 square feet

(Dimensions and square footage may vary)

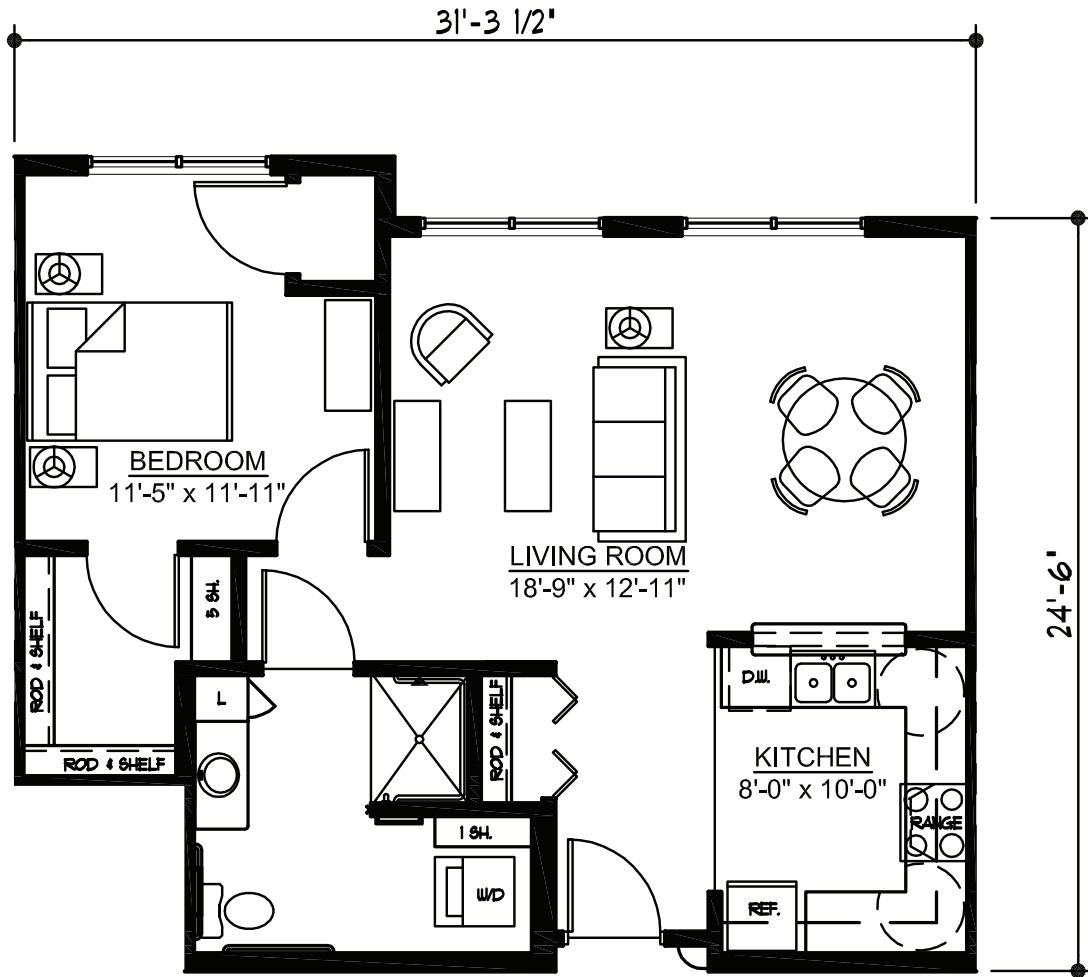
Sanford Health WoodsEdge

(218) 333-6128

1000 Anne St. NW • Bemidji, MN 56601

sanfordhealth.org

WindSong E-unit



One bedroom plus

754 square feet

(Dimensions and square footage may vary)

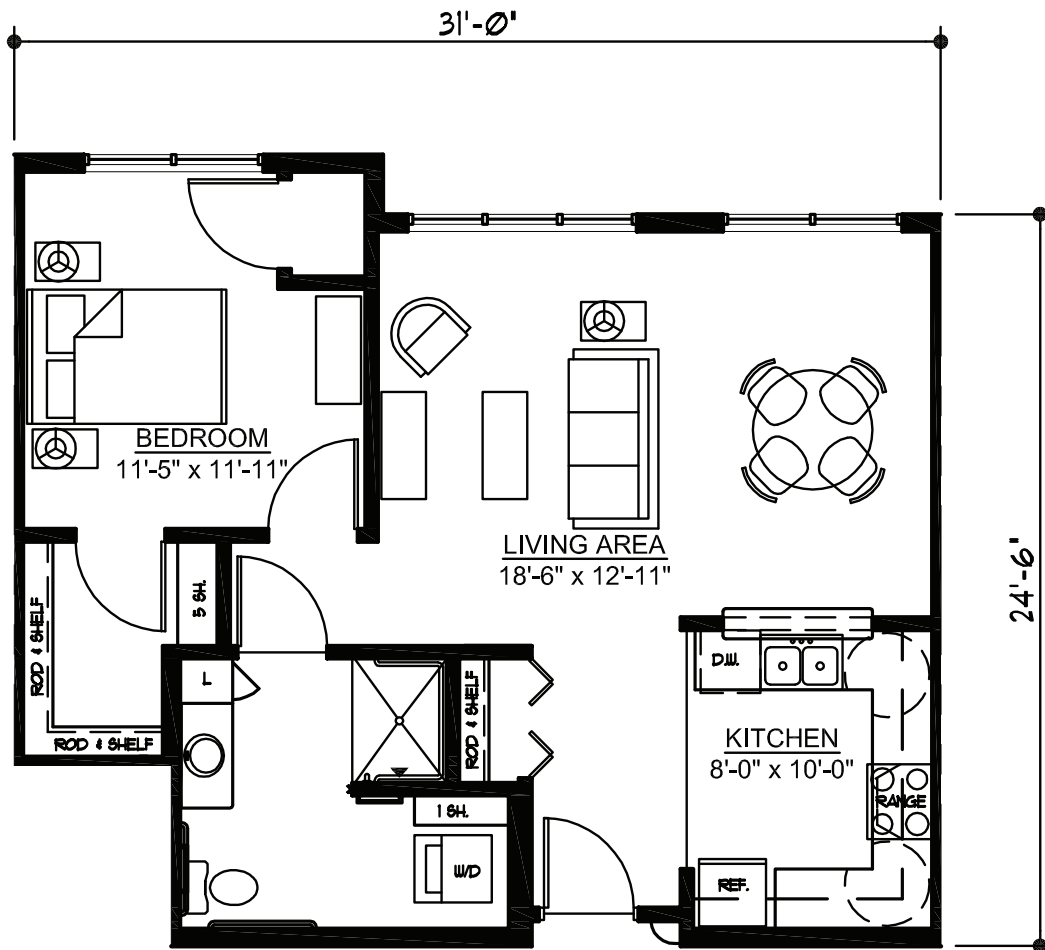
Sanford Health WoodsEdge

(218) 333-6128

1000 Anne St. NW • Bemidji, MN 56601

sanfordhealth.org

WindSong E-unit



One bedroom plus

748 square feet

(Dimensions and square footage may vary)

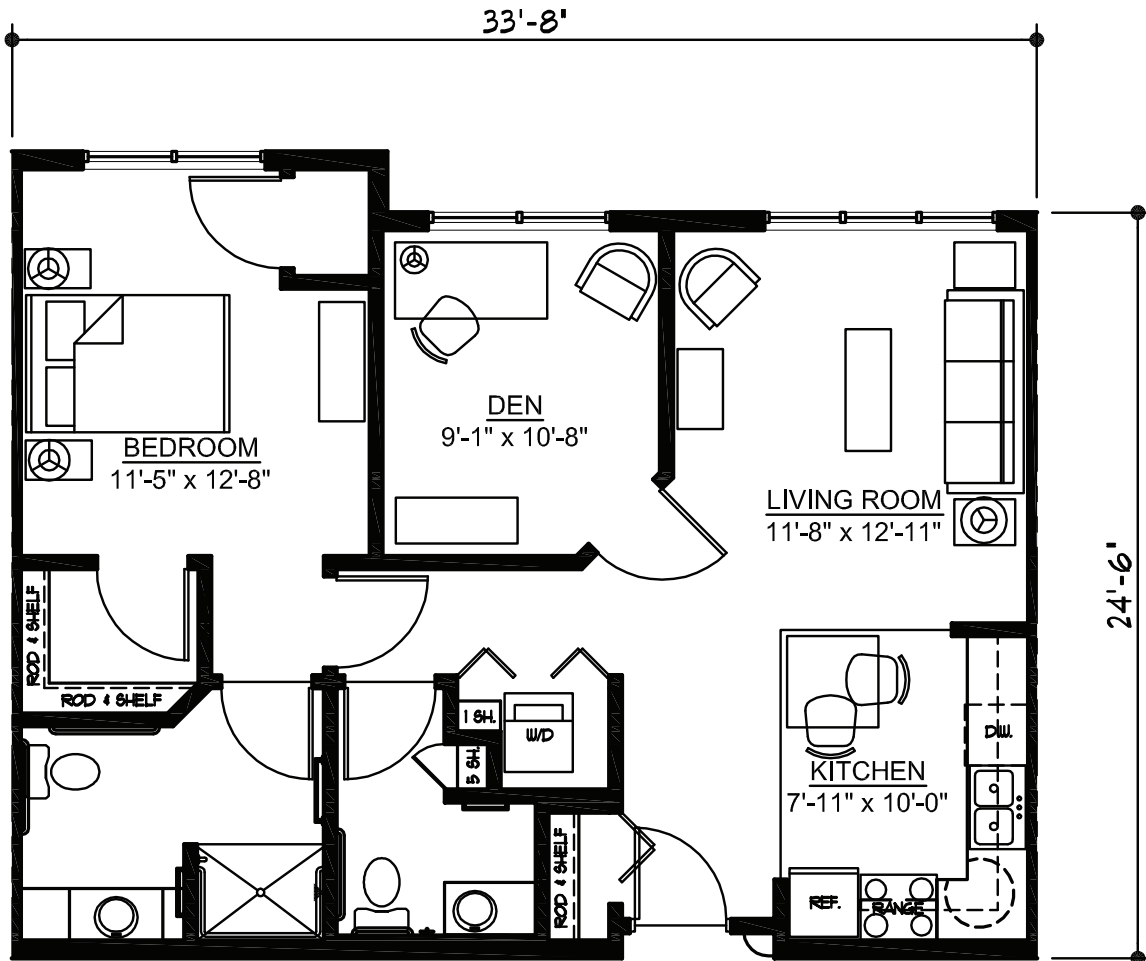
Sanford Health WoodsEdge

(218) 333-6128

1000 Anne St. NW • Bemidji, MN 56601

sanfordhealth.org

WindSong F-unit



One bedroom with den

845 square feet

(Dimensions and square footage may vary)

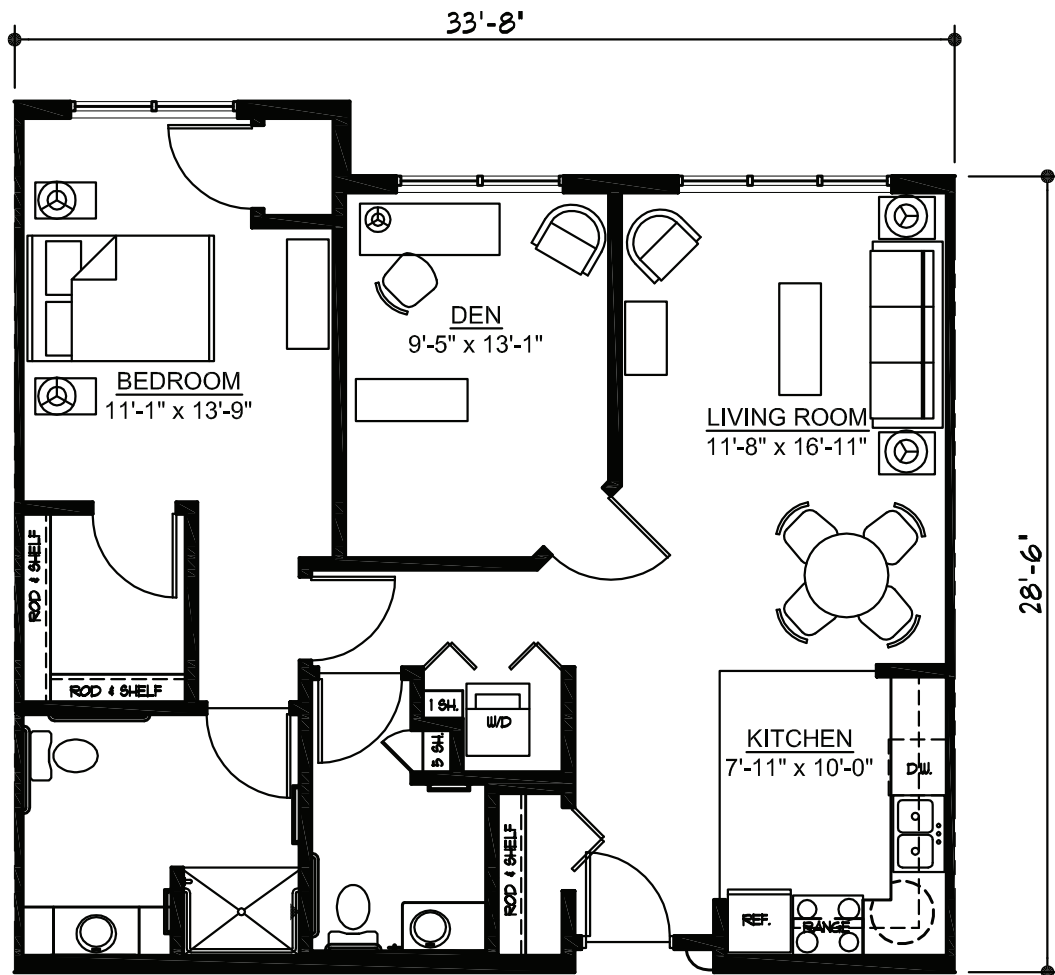
Sanford Health WoodsEdge

(218) 333-6128

1000 Anne St. NW • Bemidji, MN 56601

sanfordhealth.org

WindSong H-unit



One bedroom with den

987 square feet

(Dimensions and square footage may vary)

Sanford Health WoodsEdge

(218) 333-6128
1000 Anne St. NW • Bemidji, MN 56601
sanfordhealth.org

SANFORD
HEALTH